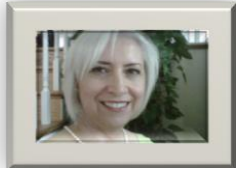


Master of Arts in Special Education Program Transition to Teaching



NEWS FROM NORMA WHEAT

October 2010
Volume 1, Issue 1

Welcome to the first edition of the Master of Arts in Special Education (MASE) program's electronic newsletter. I am so pleased with this opportunity to share news about our program and activities with students, colleagues, and friends.

The MASE program is an Option 6 alternative certification program for students who want to pursue teaching certification in Learning and Behavior Disorders (LBD, P-12). The rigorous preparation program consists of 12 blended online classes offered in 10-week sessions. The entire program can be completed in as little as 18 months.

The overall structure of the MASE program provides students with opportunities to participate in field experiences,

engage in professional collaboration through online chat sessions, and meet one another face-to-face through video-teleconferencing seminars. Emphasis is placed on in-depth strategies for educating Learning Behavior Disorder students. The program begins with an introduction to areas of exceptionalities and case law, and concludes with a graduate practicum/seminar class.

Students in the program are provided support through a comprehensive mentoring model. Six regional mentors across the Commonwealth have been hired to support graduate students in the program who are already teaching in special education classrooms.

Our mentors conduct classroom observations, face-

to-face consultations, and e-mentoring, and work on issues such as discipline, classroom management, and successful collaboration/co-teaching instructional strategies.

The mentors are **Bonnie Gelke, Marcus Pedigo, Jane Bowman, Pete Hoechner, LaVerne Watson, and Dr. Bonnie Marshall**. All are highly-qualified professionals with extensive experience in special education and/or higher education.

Finally, plans are under way for the addition of an endorsement certification program in Moderate and Severe Disabilities. We anticipate adding this program in fall 2011.

Inside this issue:

Meet The Graduate Faculty In Special Education	2
Meet The Mentors	
Student Spotlight	3
Calendar Of Upcoming Events	
School-Based Coaches' Corner	
Attention Graduates	4
Helpful Websites	
Thank You!	

TOPIC OF INTEREST TO SPECIAL EDUCATORS

ELIGIBILITY FOR IDEA SERVICES

On August 30, 2010, Larry Taylor, Director of the Division of Learners Services released a policy letter (#2010-11-01) addressing concerns over IDEA eligibility practices resulting in a significant increase in the

percentage of Kentucky students identified as having disabilities. Mr. Taylor also noted that the achievement gap between students with and without disabilities continues to rise in some districts. Drop-out rates for students with disabilities continue to be higher and graduation rates lower.

To read the policy letter, go to:

http://www.education.ky.gov/NR/rdonlyres/66BCD8C9-88A0-4D31-B3E3-268085FC721F/0/PolicyLetter2010_11_01.pdf

Special points of interest:

- Commencement will be Friday, December 10, at 7 P.M. (EST)
- For those graduating: deadline for turning in CAP documentation to the Special Education office is December 1

MEET THE GRADUATE FACULTY IN SPECIAL EDUCATION

DR. PRISCILLA BRAME

Dr. Brame is an assistant professor in the School of Education at Campbellsville University. She began teaching as an adjunct at the University in spring 2008, and became a full-time faculty member in January 2010.

She is a graduate of the College of Charleston with a B.S. degree in Special Education with an emphasis in the areas of Learning Disabilities and Emotional Disorders.

Dr. Brame earned her M.Ed. degree in Special Education with an emphasis in Mental Disabilities from the University of Charleston, S.C. Her Doctorate in Special Education and Applied Behavior Analysis is from The

Ohio State University in Columbus, Ohio.

She began her teaching career at Brentwood Middle School in Charleston, S.C. and taught for the Department of Defense Schools at Fort Knox High School, Ky. She also taught in the Department of Special Education and Child Development at the University of North Carolina at Charlotte, and has been an adjunct instructor for the University of Louisville's Special Education Department.

Dr. Brame is a member of the Council for Exceptional Children, the National Education Association, and the Association for Supervision and Curriculum Development.

She is on the Board of Directors for the National Inclusion Project (formerly the Bubel/Aiken Foundation), an organization dedicated to raising awareness about the benefits of and need for inclusion of children with

disabilities in activities with their non-disabled peers.

Dr. Brame is a Louisville, Ky. native and lives there with her husband Willie. She has a son David, and was blessed to grow up in a household with one sister and four brothers. Her first teachers and role models were her parents, John and Johnnie Baker. From them she learned the importance of God and family, the benefits of faithfulness and hard work, and the rewards of education.



MEET THE MENTORS: Jane Bowman

Jane Bowman has been a regional mentor since 2009 for the Kentucky Alternative Certification in Special Education program at Campbellsville University, serving the Southeastern Districts.

She is a lifelong resident of Summer Shade, Ky. Ms. Bowman earned her B.S. and M.A. degrees and her Rank I from Western Kentucky University.

She began teaching preschool in Metcalfe County in 1976. Since then she has served in many education capacities. She taught special needs children, and served

as Director of Special Programs in Metcalfe County (1980-90) and in Barren County (1990-2003).

Since 2003, Ms. Bowman has been an instructor/field-based practitioner in Exceptional Child Education for Western Kentucky University.

She is co-author of "Mainstreaming in the 1980s," published by the University of Missouri, Center for Research in Social Behaviors. She is also co-author and presenter of A Competency-Based Program: "Employability Skills for the Special Needs Population."

Ms. Bowman is a recipient of the Kentucky Council of Special Education

Administrators Leadership Award for her contributions to the field of Special Education and service to KYCASE.

She loves making new friends and memories, enjoys family and friends, collecting quotations, traveling, and gardening. She is into college basketball, antique hunting, HGTV, music and concerts, cooking, and animals.

Ms. Bowman believes, "There are two lasting gifts that we can give our children—one is roots, the other is wings."

STUDENT SPOTLIGHT: Daniel Kukahiko, Hopkins County Central High School, Ky.

Daniel Kukahiko, a collaborative geometry teacher in LBD 9-12, is in his first year as junior varsity coach, and has coached freshmen boys for four years.

He finished his MASE course work in February 2010, and is in his KTIP year at Hopkins County Central High School in Madisonville.

According to his school-based coach, Jennifer Hibbs, “Although all students call him ‘Coach K,’ he has emphasized to the school administration, his colleagues, and the community that he is a teacher first and a coach second.”

Mrs. Hibbs says Kukahiko takes the

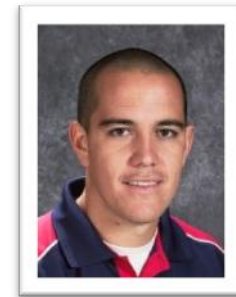
time to get to know each one of his students in the classroom and his student/athletes. He wants them to know he cares about them and about their futures.

“We have known Daniel for over five years and truly feel this is his calling. This (master’s) program has impacted his life and provided him the opportunity and courage to help others and follow his dreams,” says Mrs. Hibbs with pride.

Kukahiko creates a welcoming classroom environment, so that students come to his class each day wanting to learn a subject that can be difficult for anyone, and especially for students with learning

disabilities, according to Mrs. Hibbs.

She says Daniel’s “Christ-like attitude and positive energy are inspiring to all those he encounters. He is the depiction of what Central is and what we have to offer.”



CALENDAR OF UPCOMING EVENTS

Classroom Management Training, Campbellsville University Brockman Center, 813 Old Elizabethtown Road, Hodgenville, KY—November 17, 2010, 9:00 A.M. (EST)

45th Annual Exceptional Children’s Conference, The Galt House, Louisville, KY—November 21-23, 2010

Monthly Mentors’ Meetings
3rd Monday unless otherwise noted

Praxis II Exam Dates:
November 13, 2010
January 15, 2011
March 12, 2011
April 30, 2011
June 11, 2011
July 23, 2011

www.ets.org/praxis/register

Portfolio Workshop, January 8, 2011 (and March 5), 9 A.M.-12 P.M. (EST): 3-hour hands-on work session, Campbellsville University School of Education building, Room 123—Presenter, Norma Wheat

SED 607 Portfolio Due Dates (in Special Education office):
October 22, 2010
January 28, 2011

SCHOOL-BASED COACHES’ CORNER: Jennifer Hibbs, Hopkins County Central High School, Ky.



Jennifer Hibbs serves as a school-based coach for **Daniel Kukahiko**, featured above.

Kukahiko appreciates how Mrs. Hibbs shares her insights and tips about lesson plans, paperwork, monitoring, and other aspects of being a teacher. “She has taught me organization, and the importance of being organized in our profession.” He uses the word “priceless” when referring to the value of having someone guide you

in a new profession.

A special education teacher herself, Mrs. Hibbs is in her seventh year at the school. According to her colleagues, she makes every effort to help students with learning disabilities succeed in and out of the classroom, and strives to teach them how to succeed in life.

Great website for coaches:
<http://formativecoaching.wordpress.com/coaching-links/>



Stay connected to friends, colleagues, and the MASE program through Facebook.com:

Join our Campbellsville University Master of Arts in Special Education-organizational group@<http://www.facebook.com/group.php?gid=153096921390550>

School of Education
Special Education Program
1 University Drive
Campbellsville University
UPO 797
Campbellsville, KY 42718

nrwheat@campbellsville.edu
270.789.5169/5160
1.800.264.6014
Fax 270.789.5508

ATTENTION GRADUATES:

Alpha Epsilon Omicron/Kappa Delta Pi, our relatively new chapter of Kappa Delta Pi, is an international honor society for undergraduates and graduate students in education. Last year we initiated 52 members during our charter service, including 10 education faculty, plus Dr. Frank Cheatham, vice president for academic affairs, and nine MASE students. For 2010-11 we have one new MASE member.

To be eligible for membership, you must: have graduate standing in an institution offering an education degree and have the intent to continue academically and professionally in the field of education; demonstrate leadership attributes; have completed at least 6 credit hours of graduate course work; have at least 12 credit hours in education course work programmed, in progress, or completed; and demonstrate a cumulative GPA of 3.25 or higher for all graduate course work completed.

How much does it cost? Dues are \$48 for a one-year membership (\$90 for 2 years). For additional information about the organization and how to join, visit www.kdp.org.

Find Your Calling

www.campbellsville.edu/mase

HELPFUL WEBSITES

Instructional Approaches:

- www.teach-nology.com
- www.atozteacherstuff.com
- www.education-world.com
- www.online-stopwatch.com
- www.studygs.net
- www.pbis.org
- www.interventionscentral.org



“There are two lasting gifts that we can give our children—one is roots, the other is wings.”

*-submitted by
Jane Bowman,
KACSE Mentor*

Thank You!

As we interview potential candidates for the MASE program, we ask, “How did you hear about our program?” The response we usually hear is that someone who is already in our program or someone who graduated from our program told them about it.

We want to thank you for recommending our MASE program to your family and friends! Your positive feedback means so much to us, but it means even more to someone who is considering our program!

Thank you! Thank you! Thank you!

*Reminder:
We communicate important information to you via e-mail. Please read our messages thoroughly.*

If we only have a school e-mail address for you, check your spam folder occasionally in case our emails are being routed there.